



ONE CABLE BEACH FLOOR PLANS & RENDERINGS

EZLO COLLECTION

THE PINNACLE 600	2
THE WELLEBY 509	3
THE VERANDA 410	4
EL ROGUE 311	5
THE ENCLAVE 211	6
THE BISCAYNE 112	7



THE PINNACLE

EZLO COLLECTION

PENTHOUSE RESIDENCE 600

Air Conditioned Space

2814 ft² / 261 m²

Patio Space

1559 ft² / 145 m²

Total Space

4373 ft² / 406 m²

3 BEDROOMS

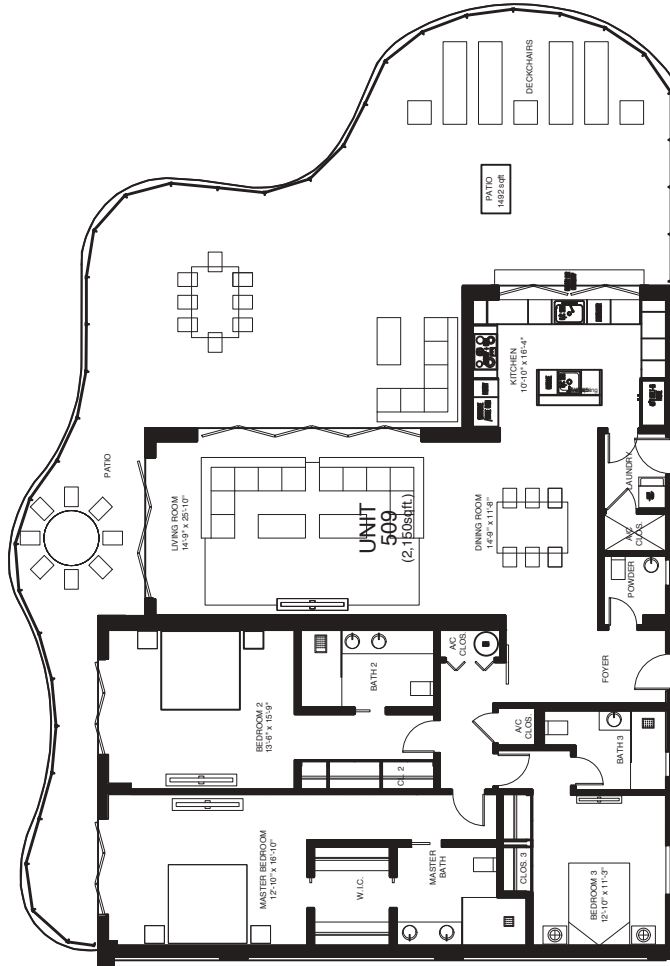
3 ½ BATHROOMS



RESIDENCE 509

THE WELLEBY

EZLO COLLECTION



Air Conditioned Space

2150 ft² / 200 m²

Patio Space

1492 ft² / 139 m²

Total Space

3642 ft² / 338 m²

3 BEDROOMS

3 ½ BATHROOMS

THE VERANDA

EZLO COLLECTION

RESIDENCE 410

Air Conditioned Space

1660 ft² / 154 m²

Patio Space

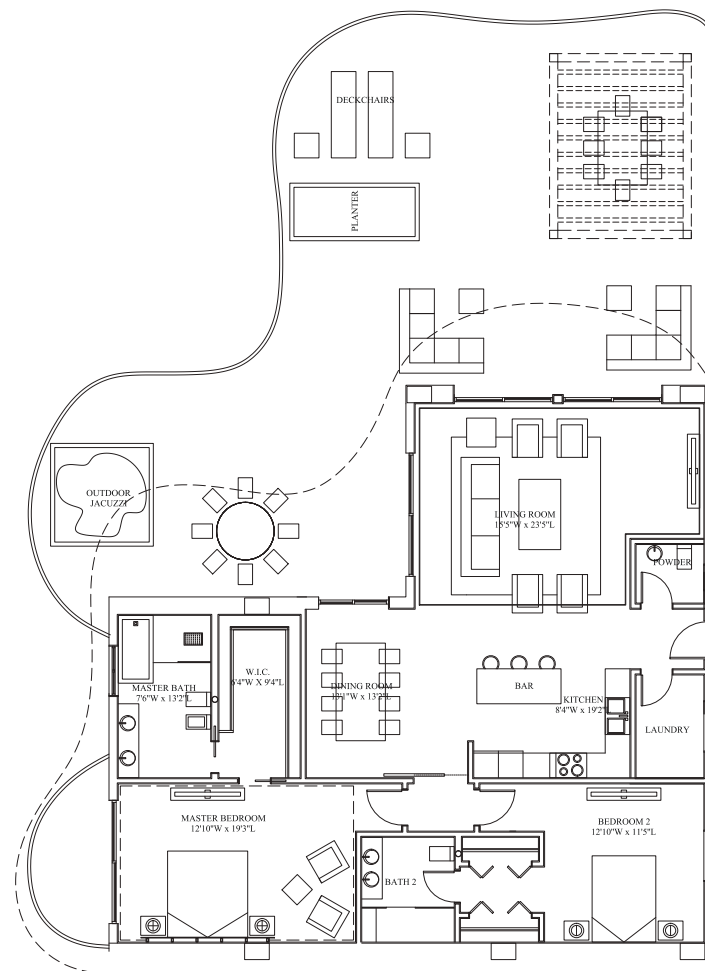
1658 ft² / 154 m²

Total Space

3318 ft² / 308 m²

2 BEDROOMS

2 ½ BATHROOMS

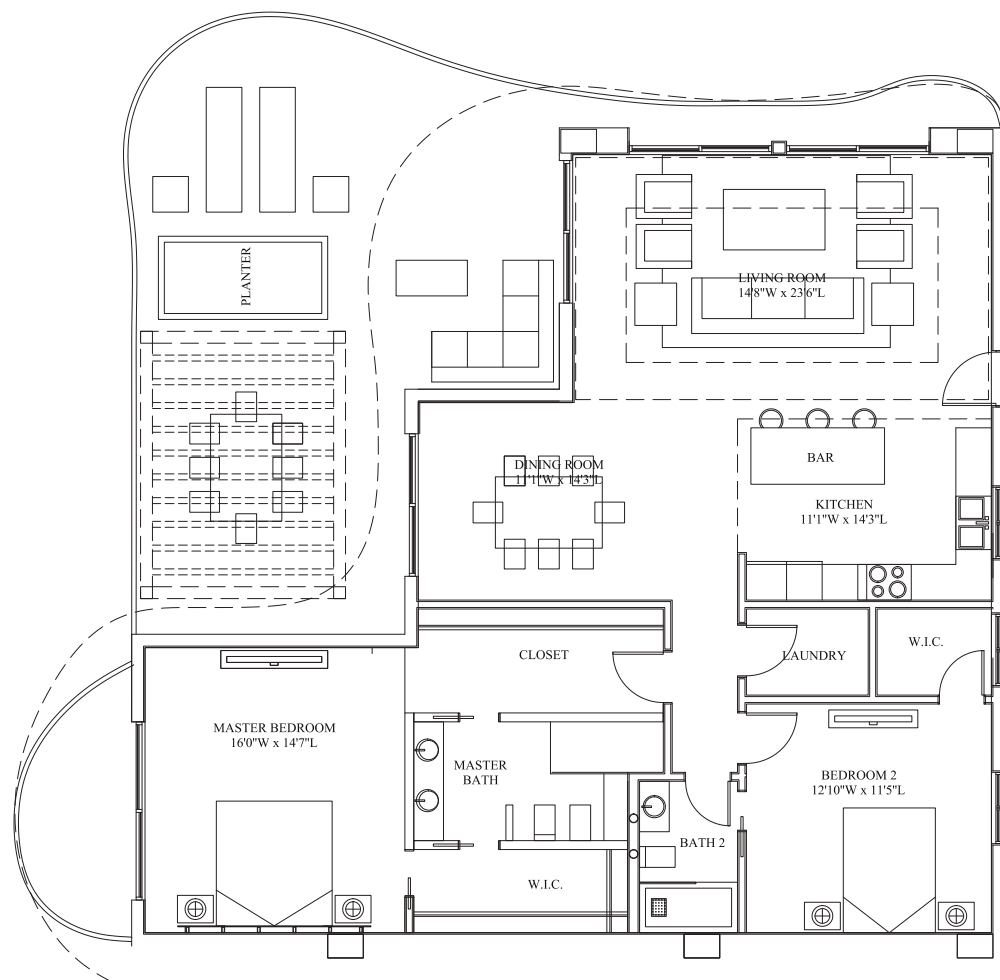


2

RESIDENCE 311

EL ROGUE

EZLO COLLECTION



Air Conditioned Space

1530 ft² / 142 m²

Patio Space

803 ft² / 75 m²

Total Space

2333 ft² / 217 m²

2 BEDROOMS

2 BATHROOMS

THE ENCLAVE

EZLO COLLECTION

RESIDENCE 211

Air Conditioned Space

1974 ft² / 183 m²

Patio Space

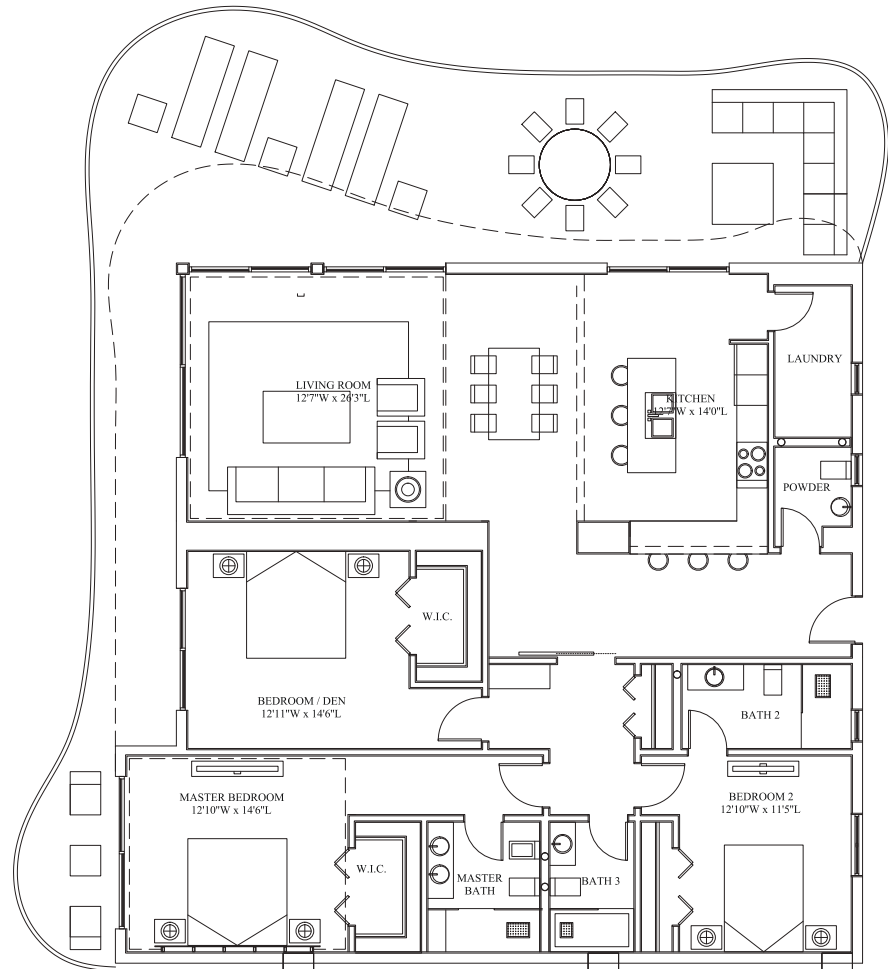
980 ft² / 91 m²

Total Space

2954 ft² / 274 m²

2 BEDROOMS

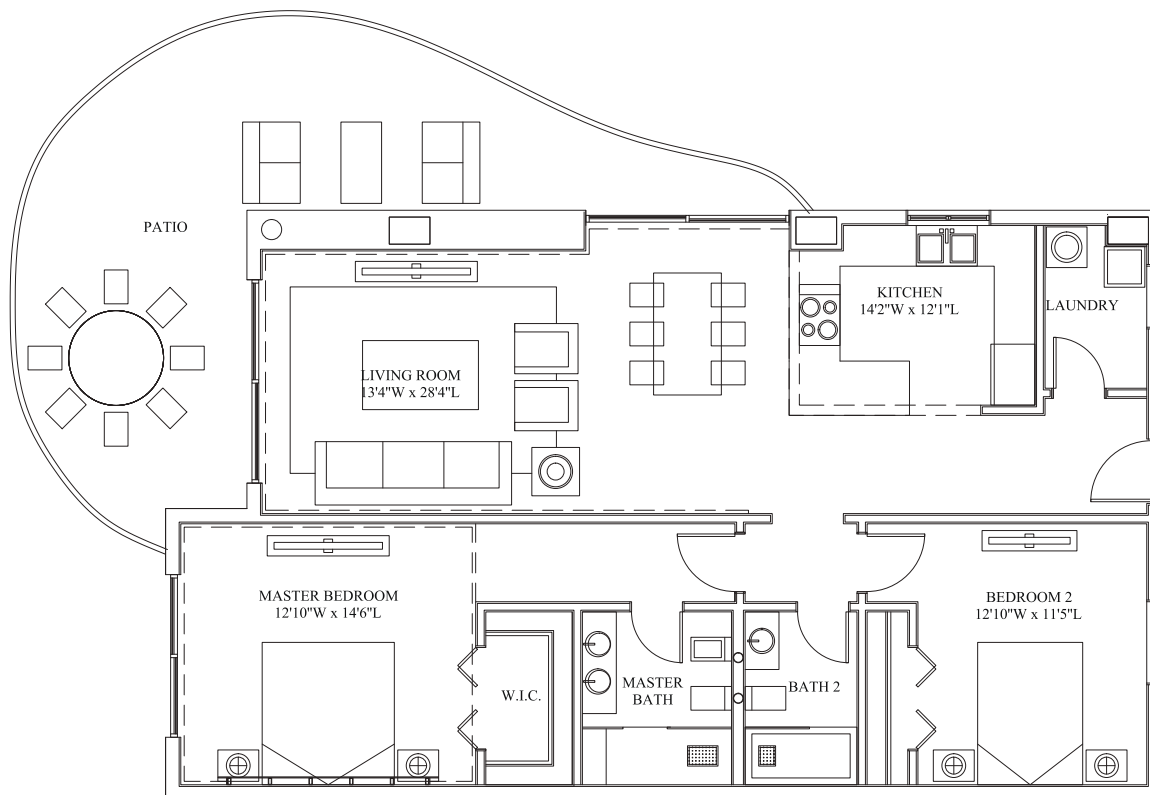
2 ½ BATHROOMS



RESIDENCE 112

THE BISCAYNE

EZLO COLLECTION



Air Conditioned Space

1225 ft² / 114 m²

Patio Space

406 ft² / 38 m²

Total Space

1631 ft² / 152 m²

2 BEDROOMS

2 BATHROOMS

PENTHOUSE RESIDENCES

RESIDENCE	PAGE
500	9-10
501	11-12
501	13-14
603	15
604	16
605	17
606 & 607	18

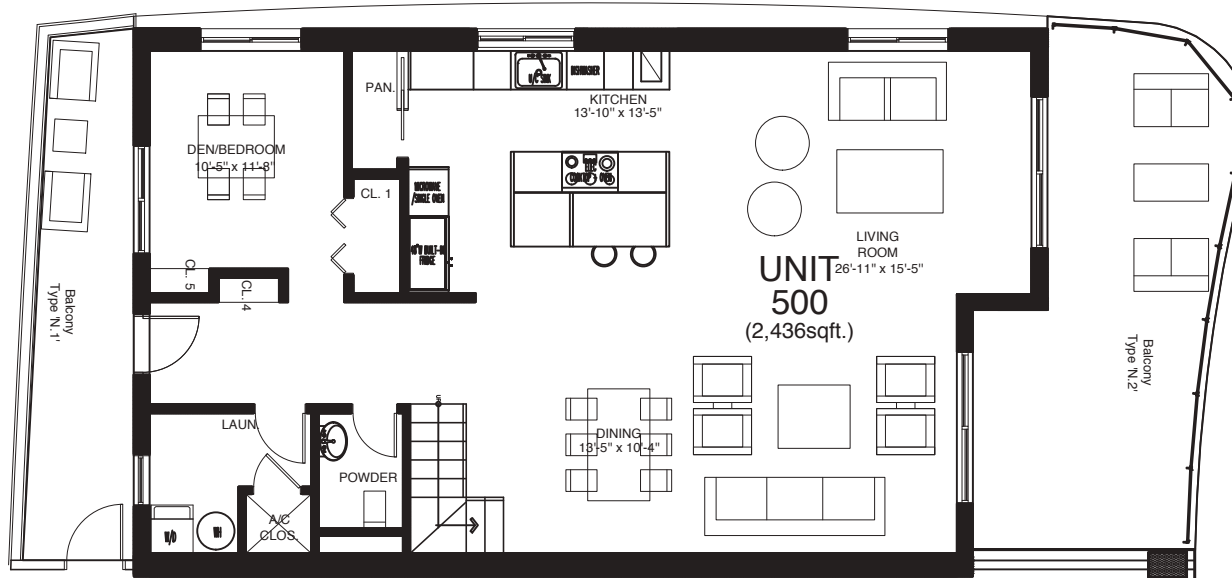
RESIDENCES

RESIDENCE	PAGE
G1	19
G2 & G3	20
G5 & G7	21
G8-G11	22
G12	23
100-400	24
101-401	25
102-402, 109-409, 110-310, 11	26
104-504	27
105-505	28
106-506, 107-507	29
108-508	30
203-503	31



PENTHOUSE RESIDENCE 500

MAIN LEVEL



Air Conditioned Space

2444 ft² / 227 m²

Patio Space

914 ft² / 85 m²

Total Space

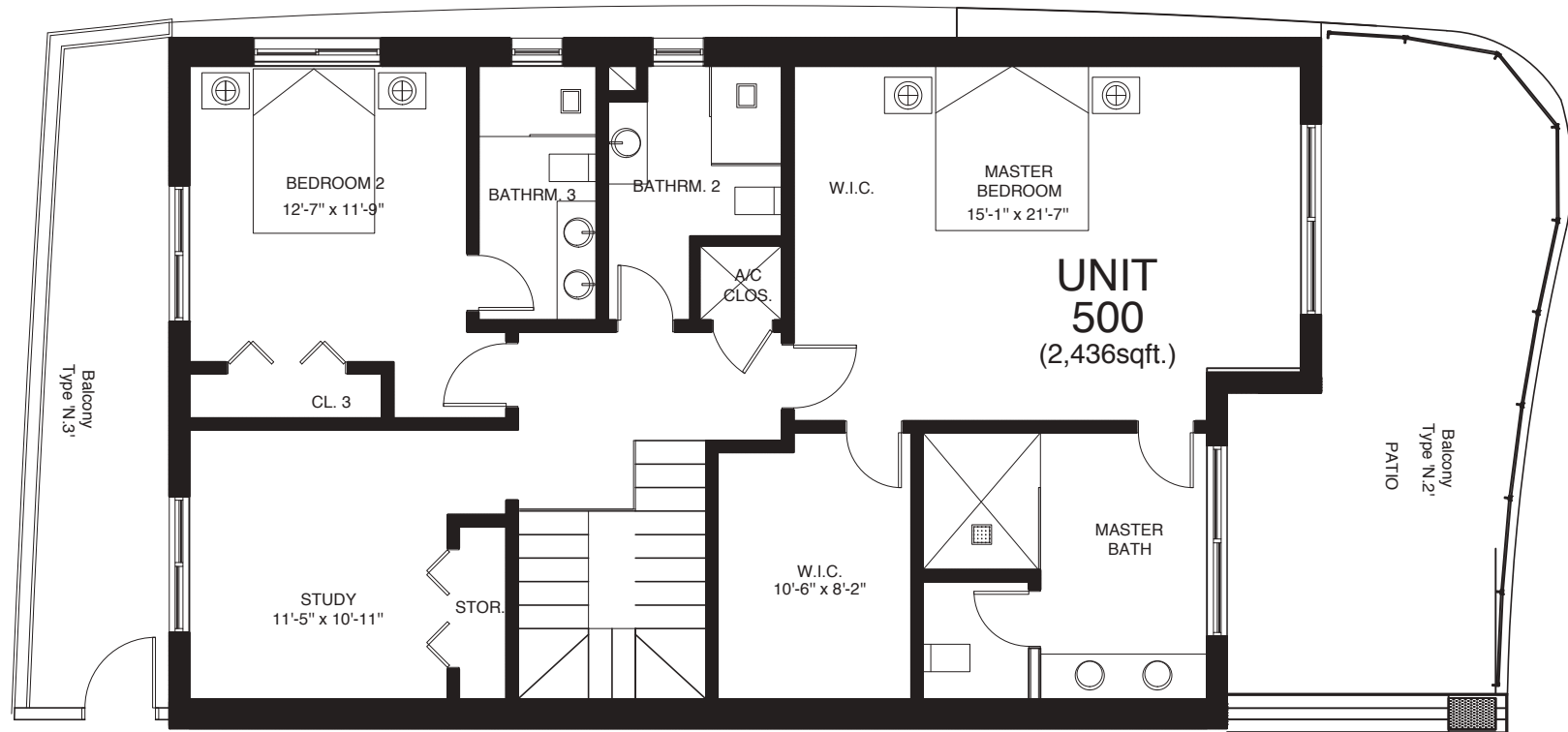
3258 ft² / 293 m²

3 BEDROOMS

3 ½ BATHROOMS

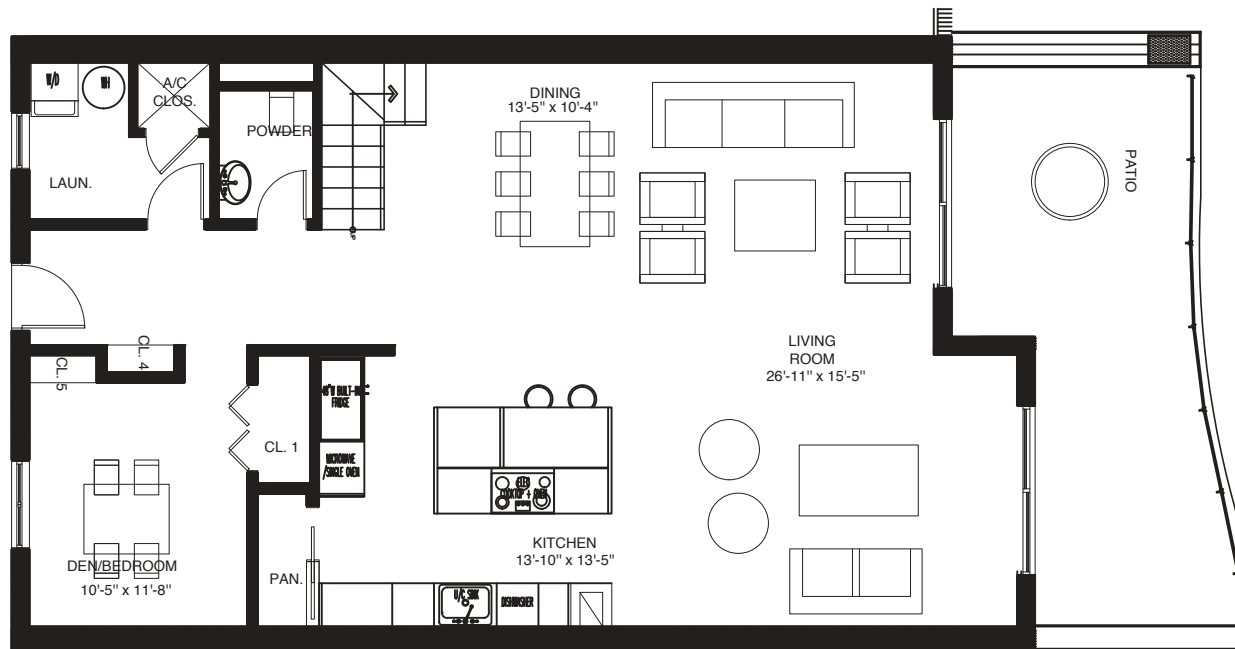
PENTHOUSE RESIDENCE 500

UPPER LEVEL



PENTHOUSE RESIDENCE 501

■ MAIN LEVEL



Air Conditioned Space

2240 ft² / 208 m²

Patio Space

560 ft² / 52 m²

Total Space

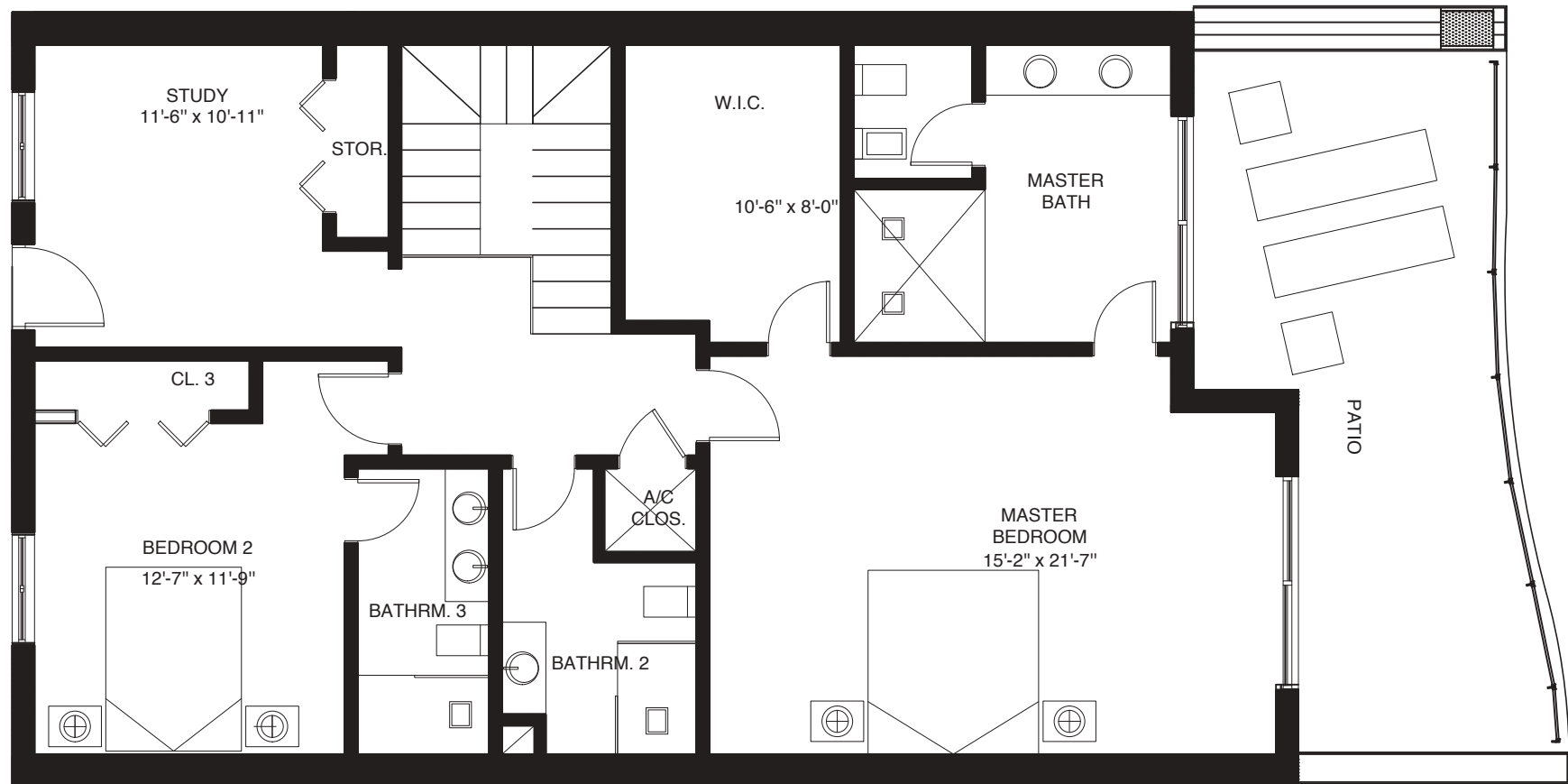
2800 ft² / 260 m²

3 BEDROOMS

3 ½ BATHROOMS

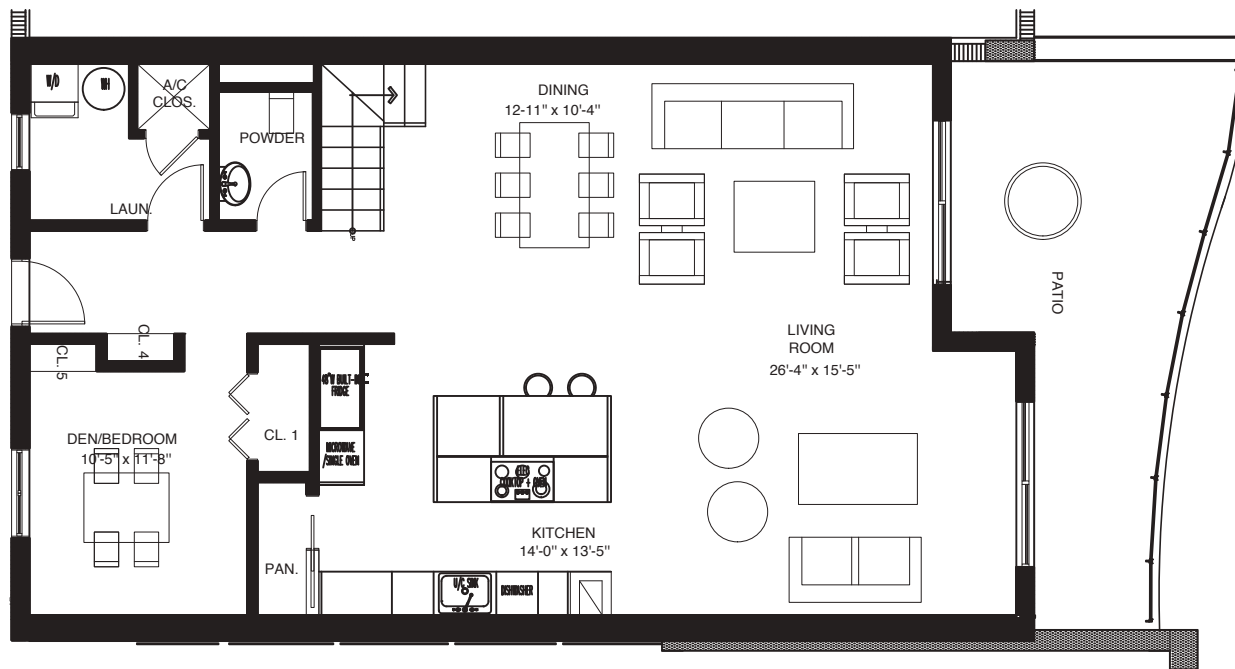
PENTHOUSE RESIDENCE 501

UPPER LEVEL



PENTHOUSE RESIDENCE 502

■ MAIN LEVEL



Air Conditioned Space

2386 ft² / 222 m²

Patio Space

520 ft² / 48 m²

Total Space

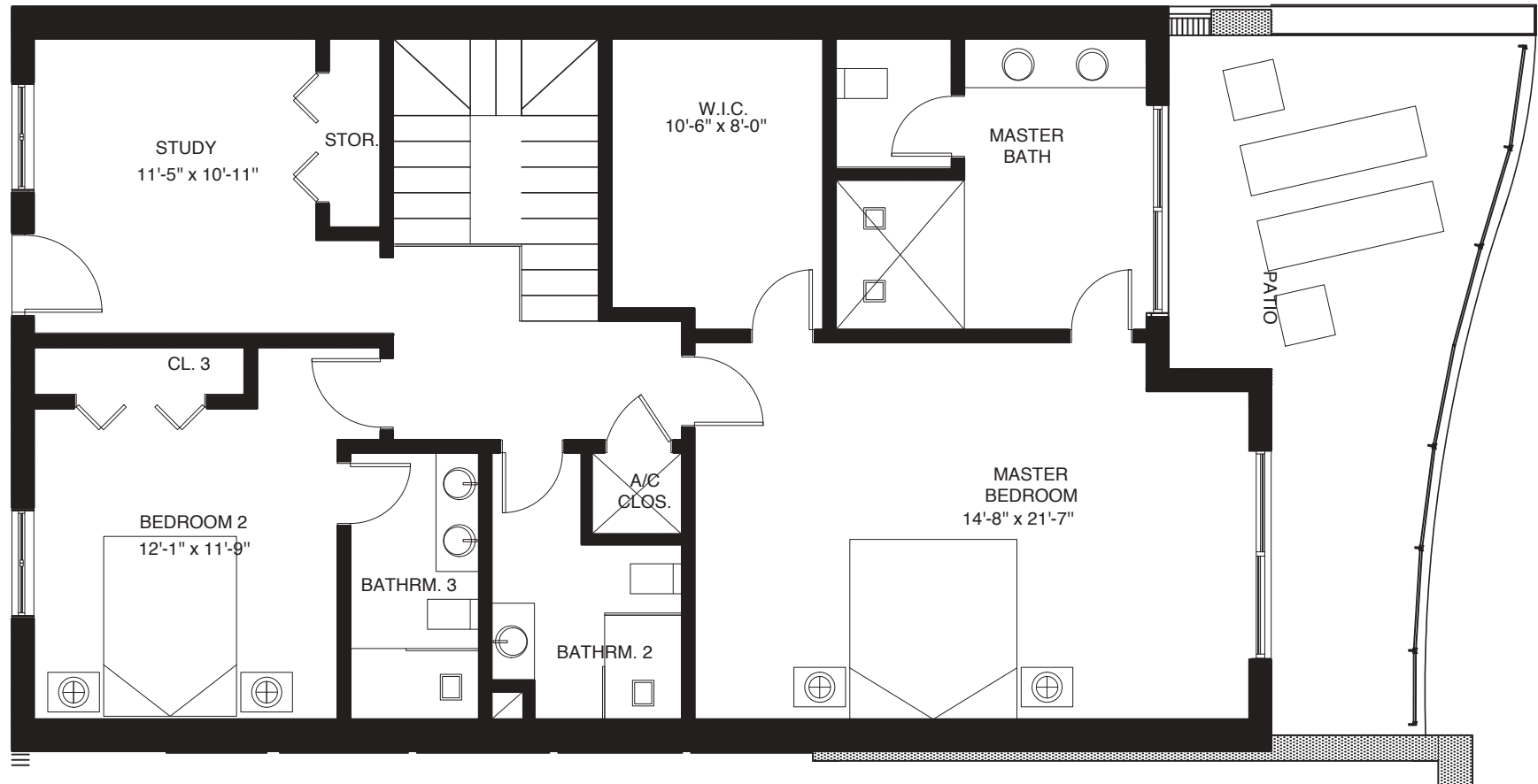
2906 ft² / 270 m²

3 BEDROOMS

3 ½ BATHROOMS

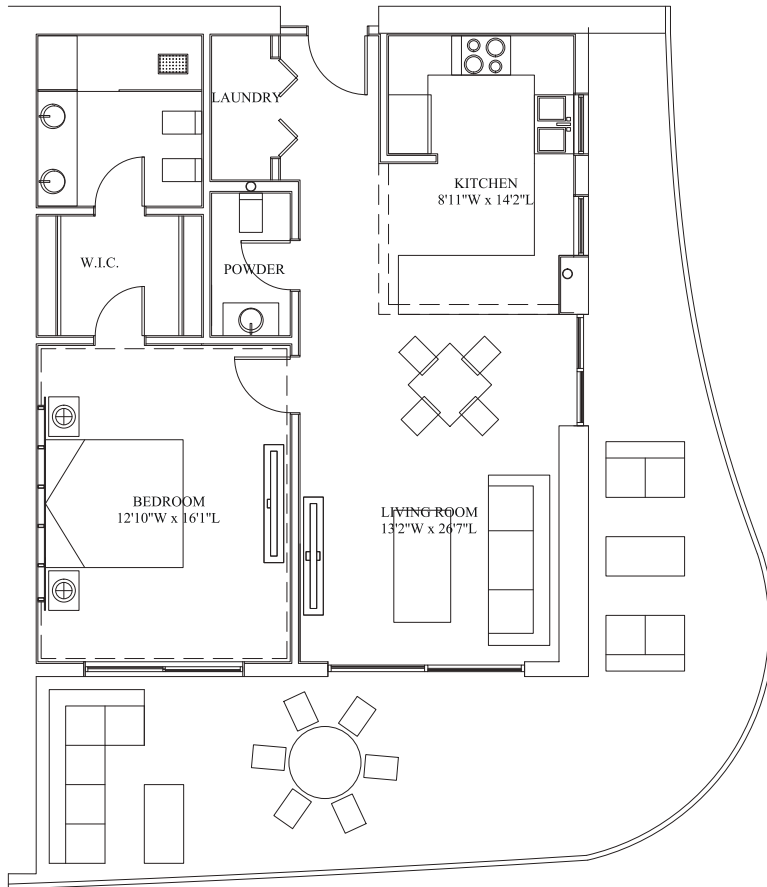
PENTHOUSE RESIDENCE 502

UPPER LEVEL



PENTHOUSE RESIDENCE 603

 THE BRICKELL



Air Conditioned Space

867 ft² / 81 m²

Patio Space

550 ft² / 51 m²

Total Space

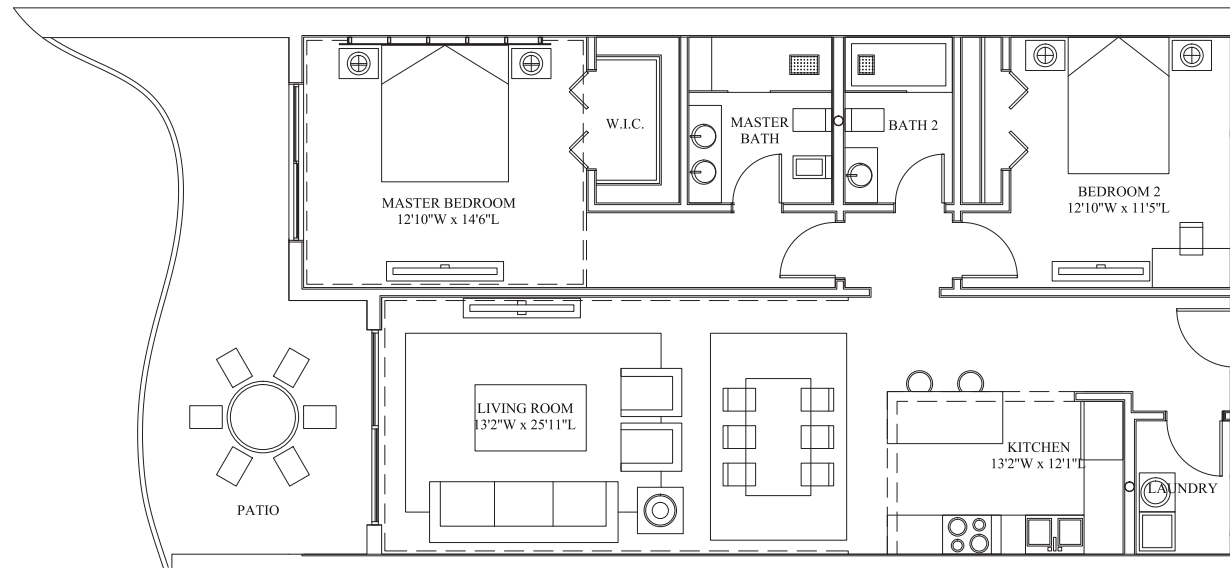
1417 ft² / 132 m²

1 BEDROOMS

1 ½ BATHROOMS

PENTHOUSE RESIDENCE 604

■ ALLURE



Air Conditioned Space

1204 ft² / 112 m²

Patio Space

250 ft² / 23 m²

Total Space

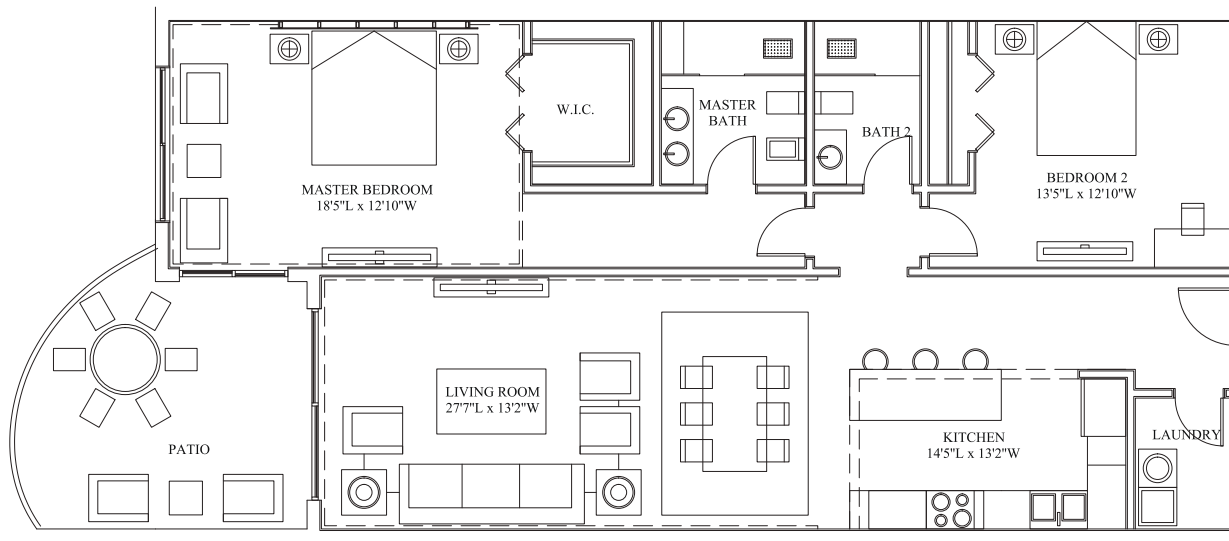
1454 ft² / 135 m²

2 BEDROOMS

2 BATHROOMS

PENTHOUSE RESIDENCE 605

 THE MADISON



Air Conditioned Space

1360 ft² / 126 m²

Patio Space

202 ft² / 19 m²

Total Space

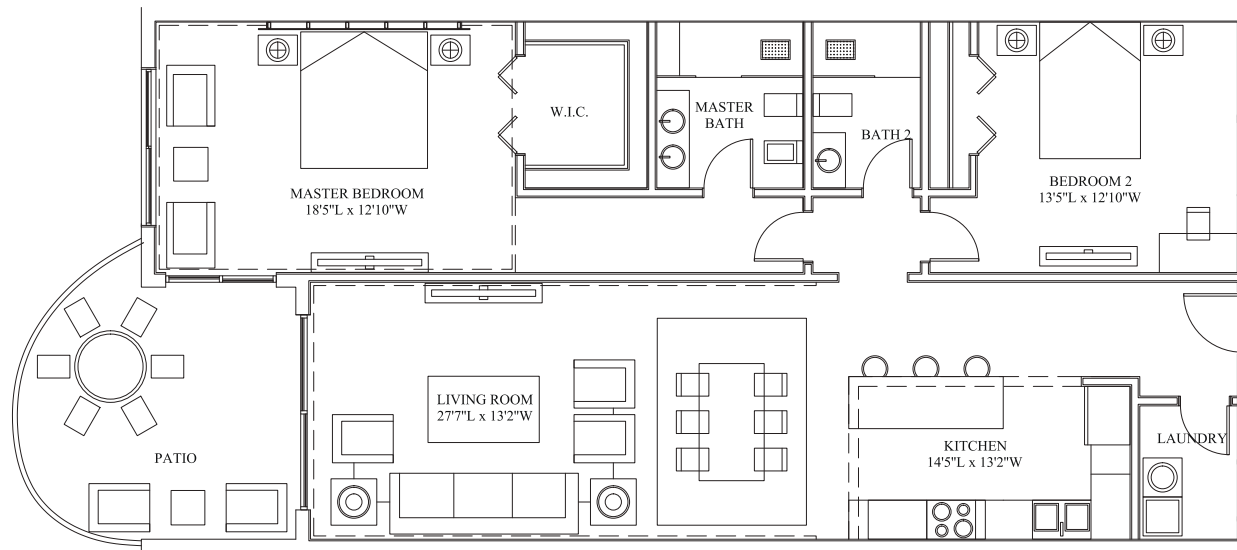
1562 ft² / 145 m²

2 BEDROOMS

2 BATHROOMS

RESIDENCES 606 & 607

THE MADISON



Air Conditioned Space

1360 ft² / 126 m²

Patio Space

181 ft² / 17 m²

Total Space

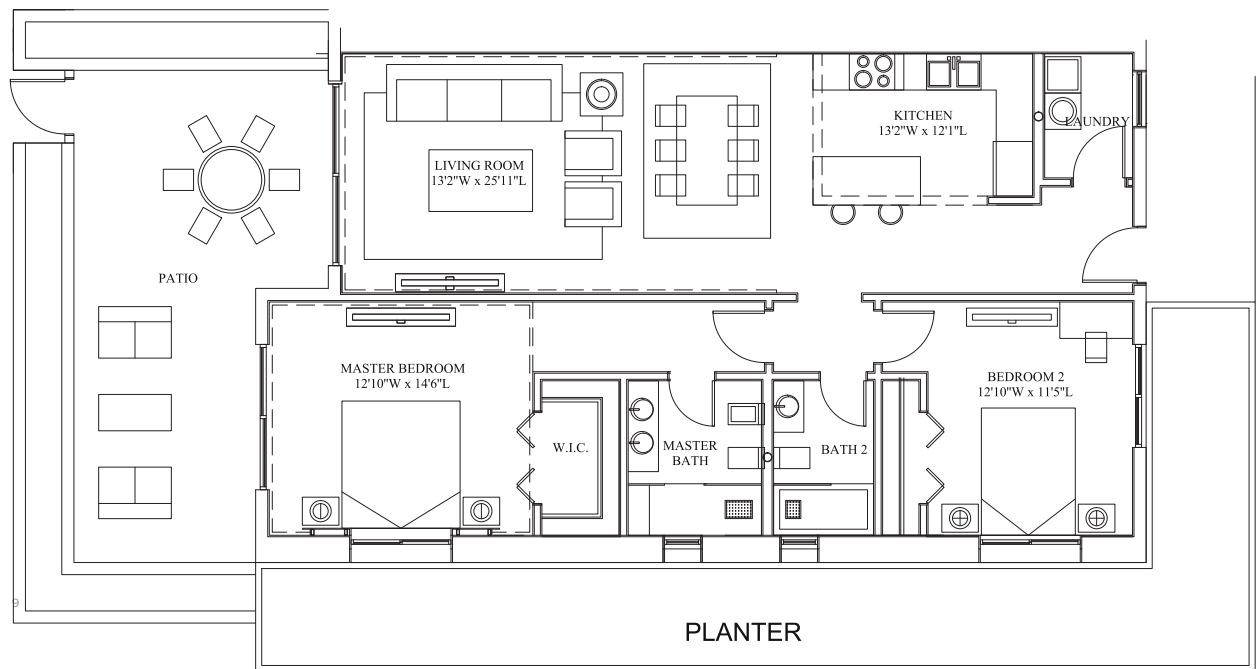
1541 ft² / 143 m²

2 BEDROOMS

2 BATHROOMS

RESIDENCE G1

ALLURE +



Air Conditioned Space

1204 ft² / 112 m²

Patio Space

343 ft² / 32 m²

Total Space

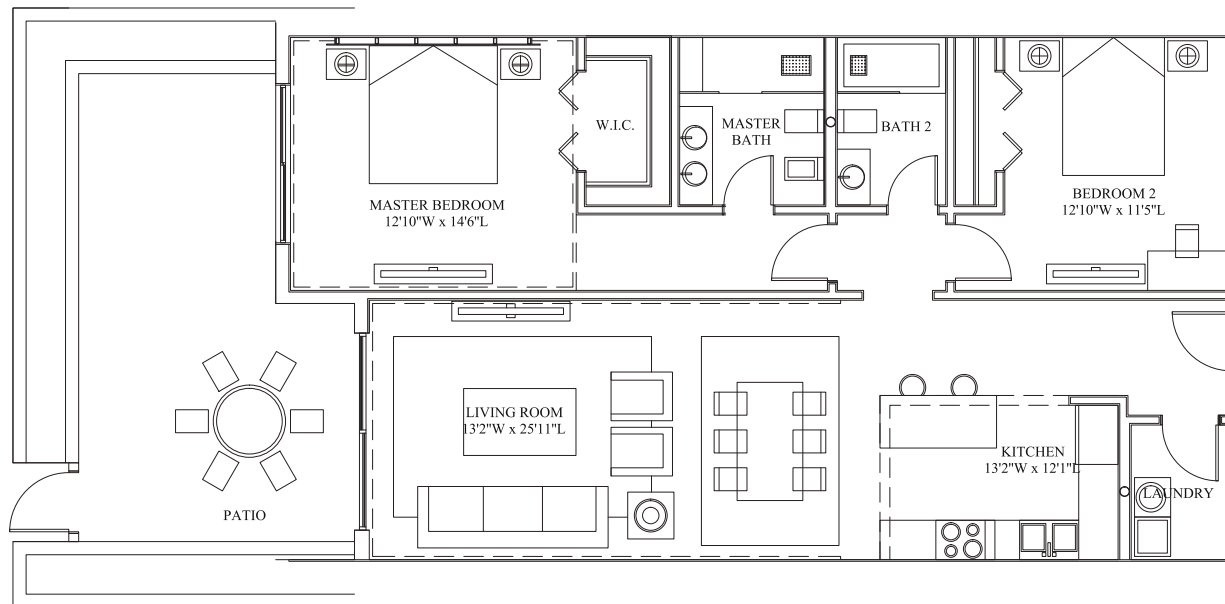
1547 ft² / 144 m²

2 BEDROOMS

2 BATHROOMS

RESIDENCES G2 & G3

ALLURE



Air Conditioned Space

1204 ft² / 112 m²

Patio Space

343 ft² / 32 m²

Total Space

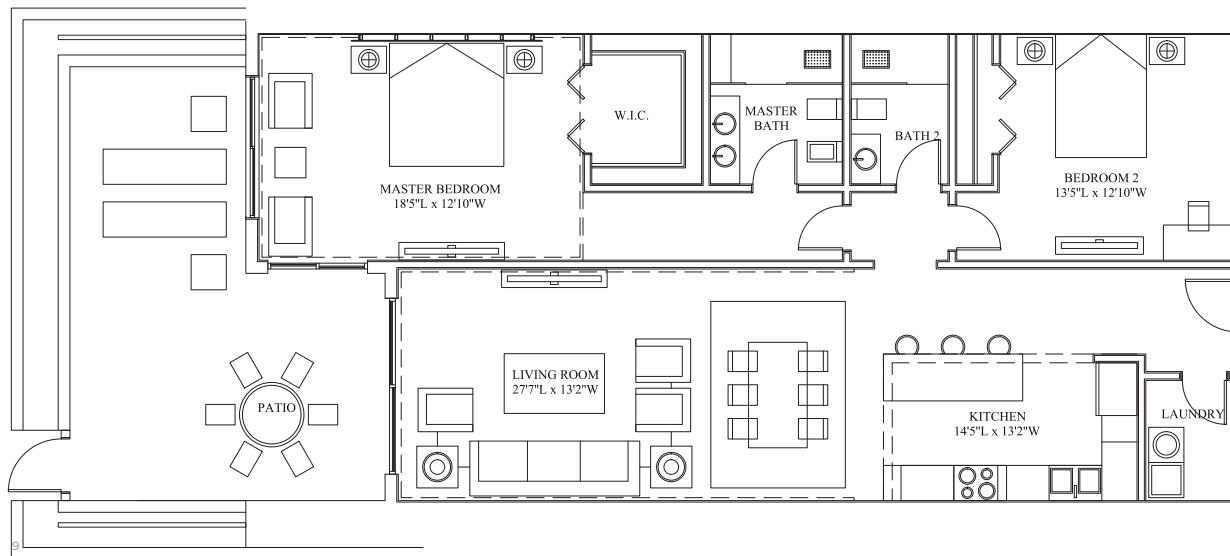
1547 ft² / 144 m²

2 BEDROOMS

2 BATHROOMS

RESIDENCES G5-G7

 THE MADISON



Air Conditioned Space

1360 ft² / 126 m²

Patio Space

202 ft² / 36 m²

Total Space

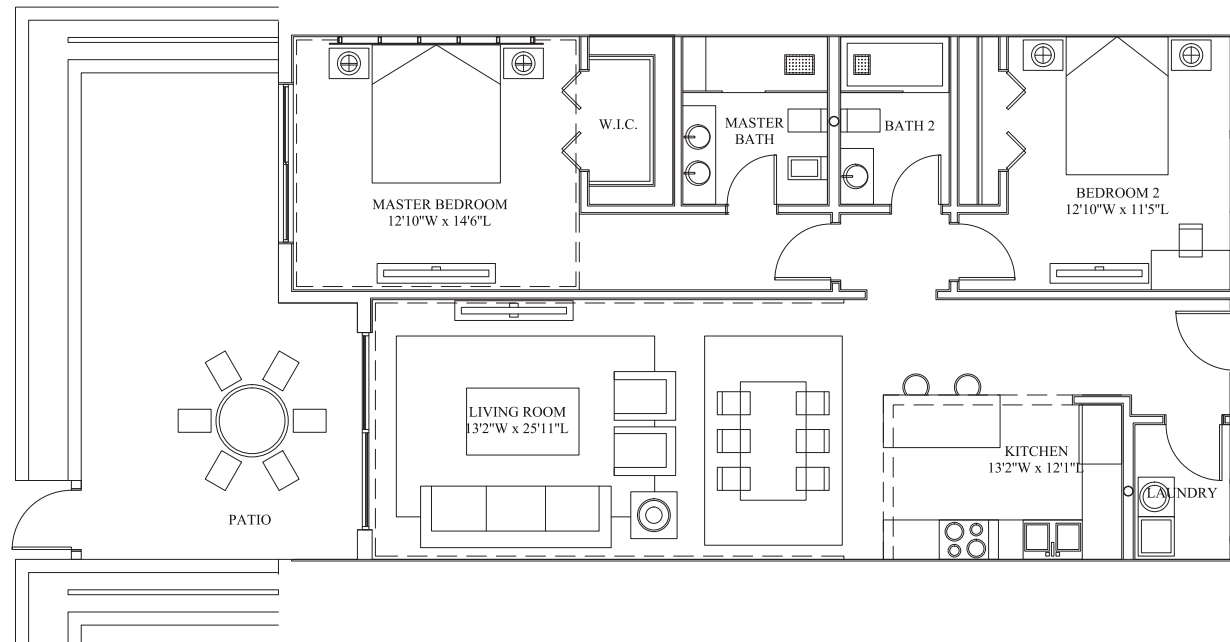
1562 ft² / 162 m²

2 BEDROOMS

2 BATHROOMS

RESIDENCES G8-G11

ALLURE



Air Conditioned Space

1204 ft² / 112 m²

Patio Space

332 ft² / 31 m²

Total Space

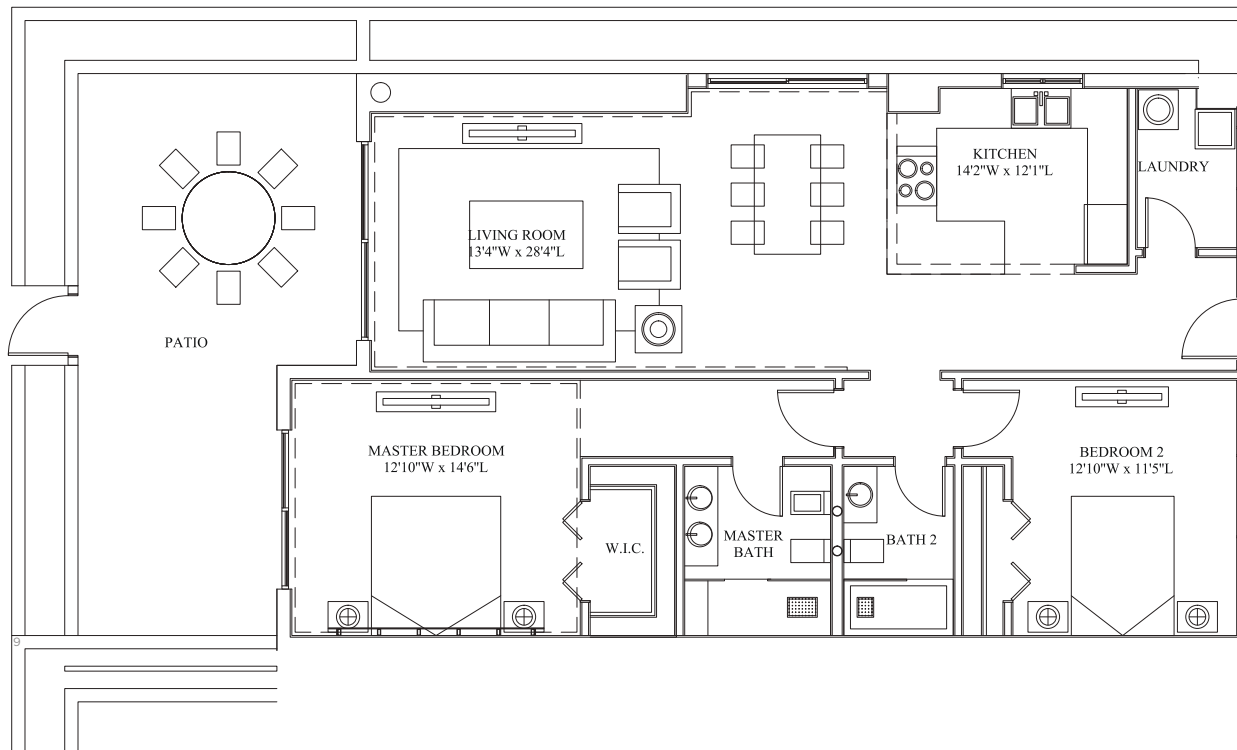
1536 ft² / 143 m²

2 BEDROOMS

2 BATHROOMS

RESIDENCE G12

■ ALLURE ++



Air Conditioned Space

1204 ft² / 112 m²

Patio Space

341 ft² / 31 m²

Total Space

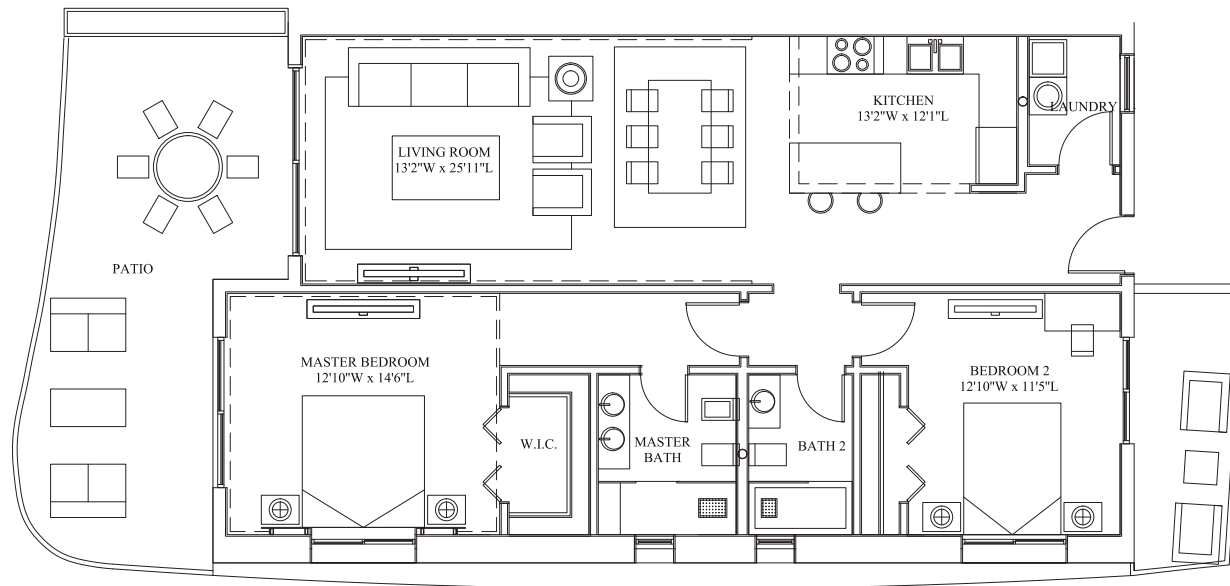
1545 ft² / 143 m²

2 BEDROOMS

2 BATHROOMS

RESIDENCES 100-400

 ALLURE +



Air Conditioned Space

1204 ft² / 112 m²

Patio Space

402 ft² / 37 m²

Total Space

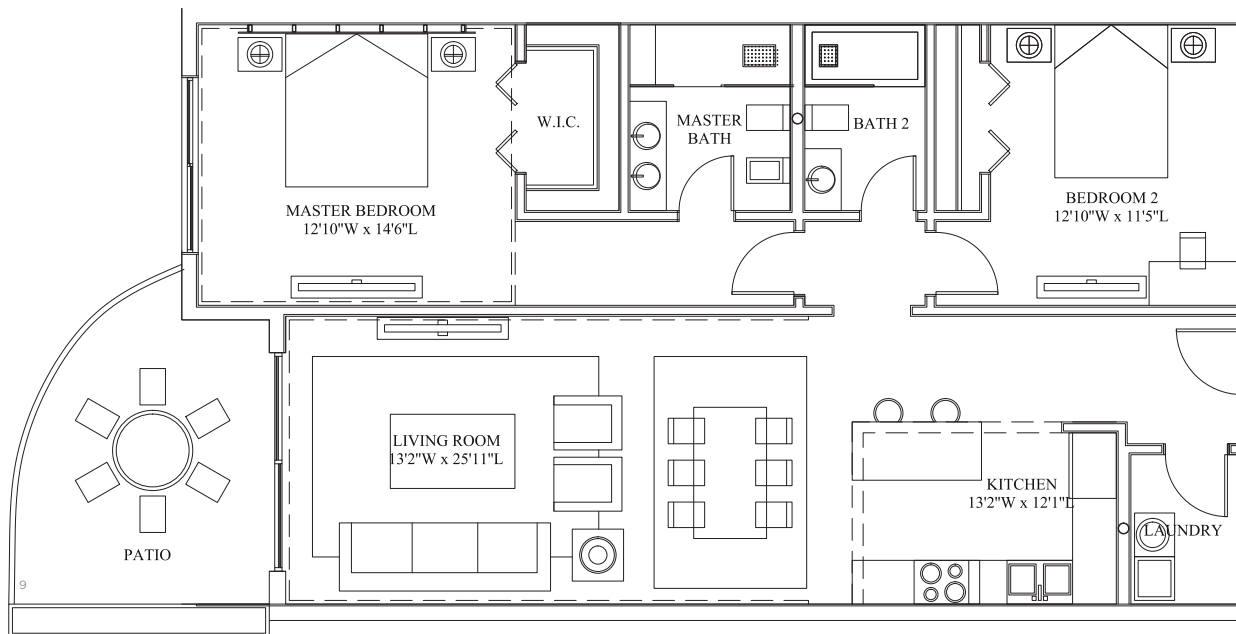
1606 ft² / 149 m²

2 BEDROOMS

2 BATHROOMS

RESIDENCES 101-401

■ ALLURE



Air Conditioned Space

1204 ft² / 112 m²

Patio Space

250 ft² / 23 m²

Total Space

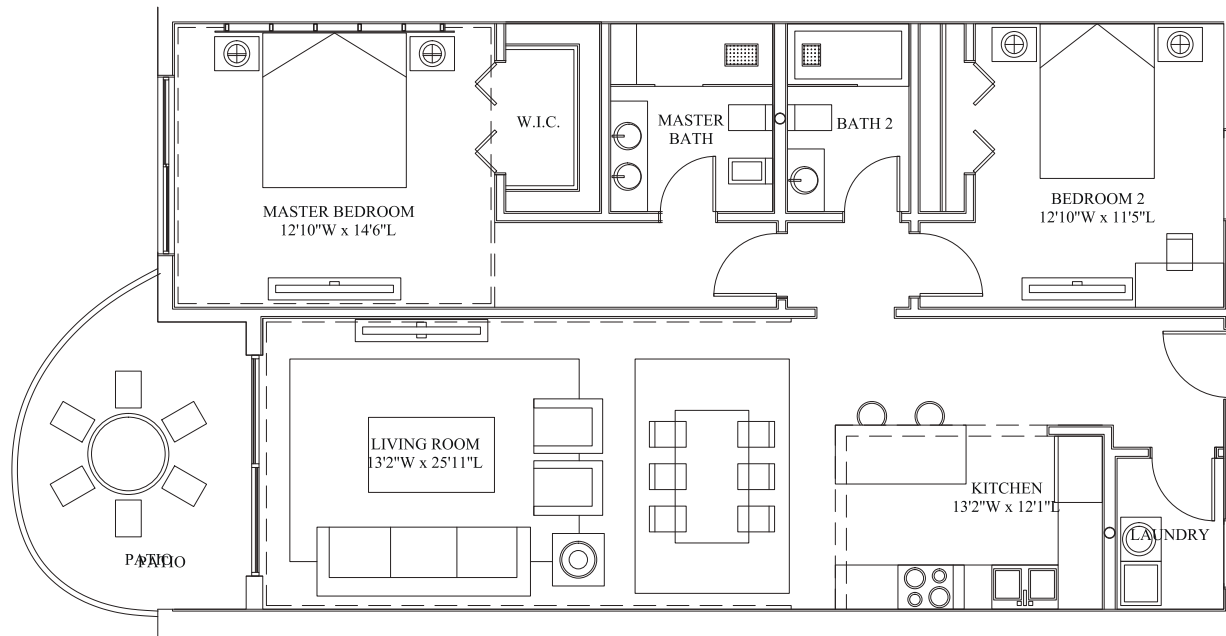
1454 ft² / 135 m²

2 BEDROOMS

2 BATHROOMS

RESIDENCES 102-402, 109-409, 110-310, 111

ALLURE



Air Conditioned Space

1204 ft² / 112 m²

Patio Space

131 ft² / 12 m²

Total Space

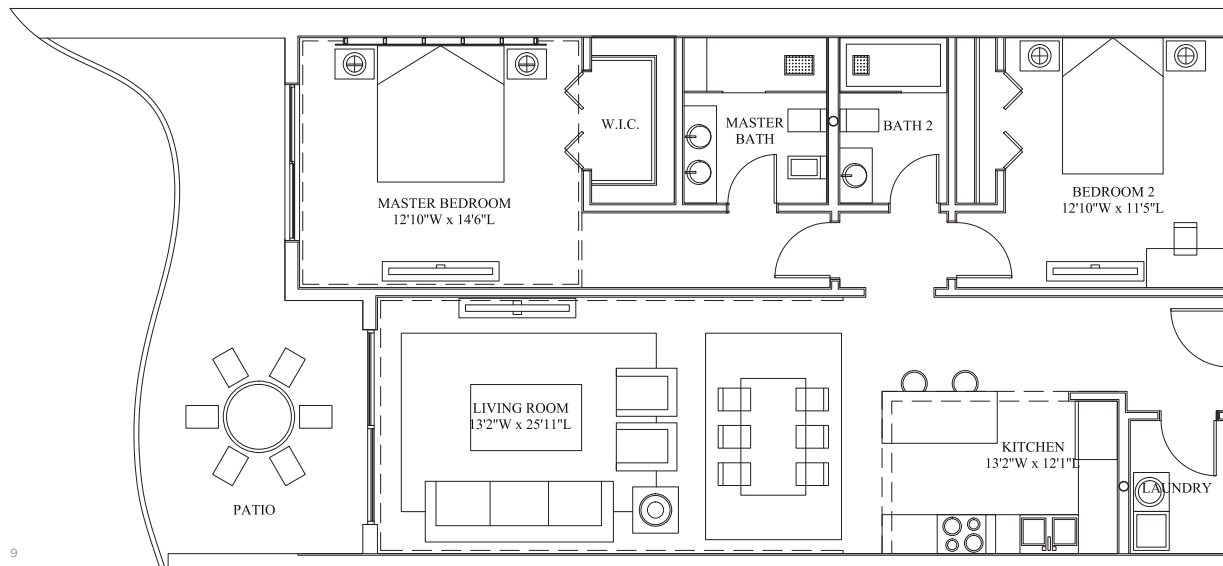
1335 ft² / 124 m²

2 BEDROOMS

2 BATHROOMS

RESIDENCES 104-504

ALLURE



Air Conditioned Space

1204 ft² / 112 m²

Patio Space

250 ft² / 23 m²

Total Space

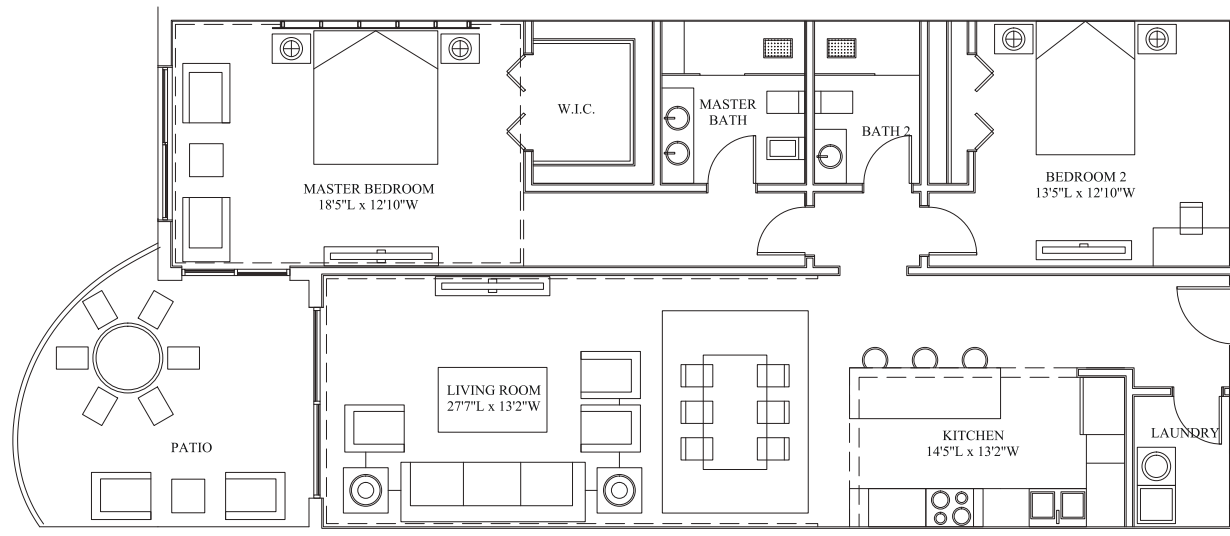
1454 ft² / 135 m²

2 BEDROOMS

2 BATHROOMS

RESIDENCES 105-505

THE MADISON



Air Conditioned Space

1360 ft² / 126 m²

Patio Space

202 ft² / 19 m²

Total Space

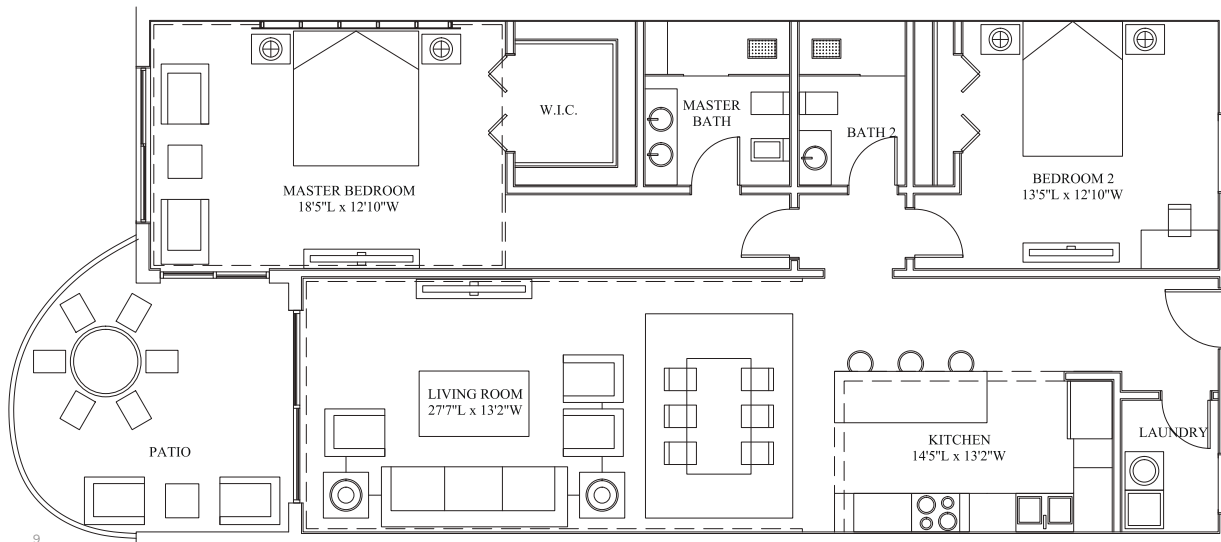
1562 ft² / 145 m²

2 BEDROOMS

2 BATHROOMS

RESIDENCES 106-506, 107-507

 THE MADISON



Air Conditioned Space

1360 ft² / 126 m²

Patio Space

181 ft² / 17 m²

Total Space

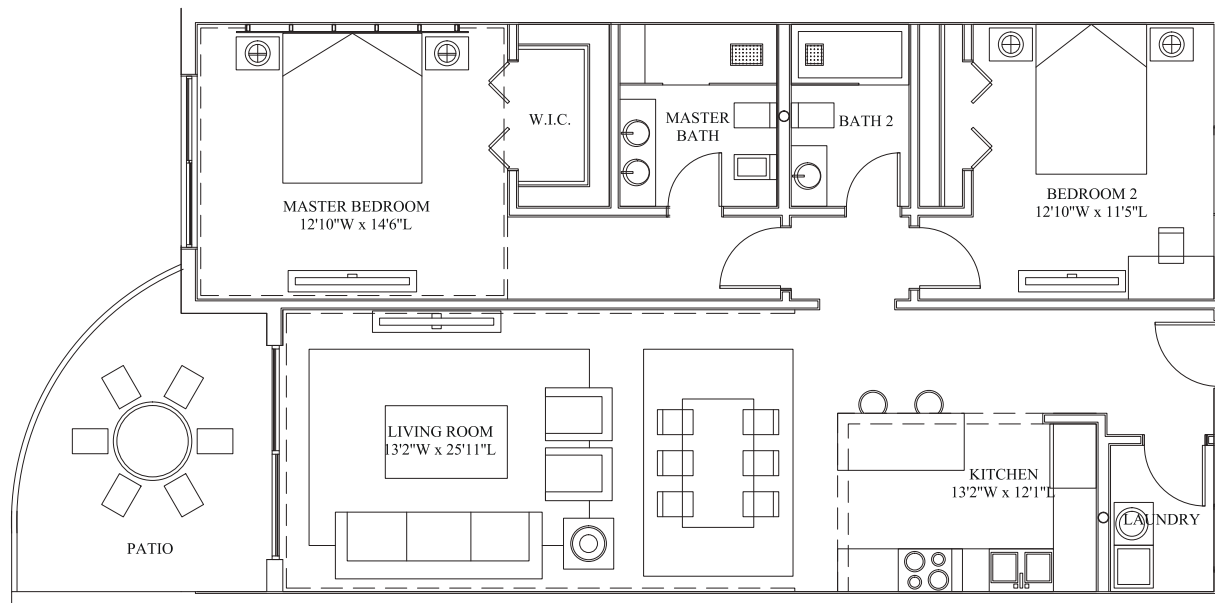
1541 ft² / 143 m²

2 BEDROOMS

2 BATHROOMS

RESIDENCES 108-508

 ALLURE



Air Conditioned Space

1204 ft² / 112 m²

Patio Space

146 ft² / 14 m²

Total Space

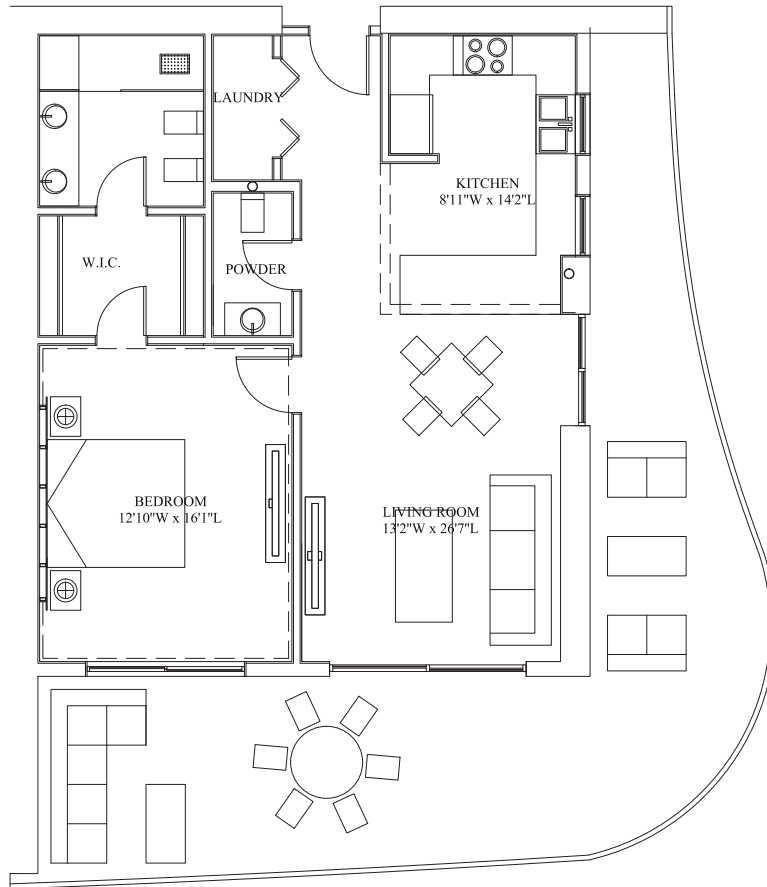
1350 ft² / 126 m²

2 BEDROOMS

2 BATHROOMS

RESIDENCES 203-503

 THE BRICKELL



Air Conditioned Space

867 ft² / 81 m²

Patio Space

550 ft² / 51 m²

Total Space

1417 ft² / 132 m²

1 BEDROOMS

1 ½ BATHROOMS

STACKING PLAN





FREQUENTLY ASKED QUESTIONS

WHAT IS ONE CABLE BEACH? ONE Cable Beach is an exclusive master planned residential community situated on West Bay Street in Cable Beach. It is intended that the community will comprise 74 condominium units including an infinity pool, gym and cabana area on the beach.

WHO IS THE DEVELOPER OF ONE CABLE BEACH? The company that will develop ONE Cable Beach is a Bahamian corporation named Aristo Development Limited, distinctive developers of prime Bahamas real estate on Nassau and Paradise Island.

The principals of ONE Cable Beach have international real estate experience in Europe, Canada, The United States and The Bahamas (having completed Hampton Ridge, The Balmoral, and THIRTY SIX on Paradise Island).

WHEN DO I TAKE TITLE OR OWNERSHIP OF MY CONDOMINIUM UNIT? The purchaser will take title of the unit when the unit is complete and occupancy certificate has been issued. To complete the finishing of the unit, the owner will be required to enter into a stage payment agreement with the developer. Estimated completion is Summer of 2017.

WHAT OWNERSHIP RESTRICTIONS APPLY TO THE OWNERSHIP OF MY CONDOMINIUM UNIT? In addition to the Master Declaration, a condominium owner will be subject to the rules set out in the applicable condominium declaration. This means that a condominium unit owner will be required to pay (i) his proportionate share of the common expenses of his condominium and common area (e.g. property insurance, maintenance and administration) and (ii) his proportionate share in the cost of the master community common expenses.

WHO WILL MANAGE THE MASTER HOMEOWNERS' ASSOCIATION AND THE CONDOMINIUM ASSOCIATIONS? An affiliate of the developer will be appointed the exclusive management company of the master homeowners' association and the individual condominium associations.

WHAT KIND OF SECURITY WILL BE IN PLACE? The entire community will be gated with guarded entry. We will also have security based on the property 24 hours per day.

ARE PETS GOING TO BE ALLOWED? Yes, dogs and cats are permitted.

IF YOU ARE THE OWNER OF A PROPERTY AND LEASING TO A TENANT, WHAT RESTRICTIONS, IF ANY, WOULD THERE BE ON THE TENANT HAVING ACCESS TO THE AMENITIES? There are no restrictions.

WOULD THERE BE A RESTRICTION ON THE TERM OF ANY LEASES SIGNED BY A HOME OWNERHOMEOWNER? There are no restrictions on the term of leases to tenants.

WHAT RECOURSE IS THERE FOR NEIGHBORS WITH LACK OF UNIT MAINTENANCE OR OTHER COMPLAINTS? Master Association has the right to levy a special assessment and make repairs at owner's expense.

WHO WILL BUILD THE CONDOMINIUM UNITS? The developer directly, or an affiliate of the developer, will be the general contractor with respect to the construction and completion of all the condominium units within the development.

WILL THERE BE IMPACT RESISTANT WINDOWS? Yes, 150 mph hurricane rated resistant windows.

HOW DO I KNOW THE BUILDING IS WELL BUILT? The building is subject to inspection during every stage of construction. It is inspected by the Ministry, the bank's inspector, our engineer, and our architect to ensure that all building guidelines are adhered to.

ARE YOU USING TANKLESS WATER HEATERS? Yes we are.

WILL THE UNITS INCLUDE CENTRAL AIR CONDITIONING? Yes, central air conditioning is included in each unit. There will be one AC unit per unit.

ARE THE APPLIANCES INCLUDED? Appliances are not included with your purchase.

IS THERE ANY PARKING? There is one parking space per unit.

DO YOU PROVIDE IN HOUSE FINANCING? We do not provide in house financing but we do have relationships with all the major lending institutions and can refer you to a recommended mortgage specialist. RBC Royal Bank has arranged preferred financing for our clients.

ARE THERE CONDOMINIUM FEES, IF SO, WHAT WILL THE FEES COVER? Yes there are. Each member of the association will be responsible for contributing to condominium fees. The fees will cover maintenance (exterior paint, landscape), security and other associated fees. We estimate the fees to be approximately \$750-\$800 for a typical two-bedroom per month including insurance.

